

# mōt.OS®

## One Operating System. Total Control.

mōt.OS® is Formova's motion operating system—and the heart of our total automation intelligence offering, designed to maximize the life cycle value of your system. It allows you to control multiple fleets from multiple manufacturers in a single, coordinated platform, giving you a clearer view of your operation and greater control over how everything moves. The result: smarter decisions, smoother flow, and automation that is **SIMPLE, SCALABLE, and SUSTAINABLE**.

## Keep Mission-Critical Operations Forever in Motion

### SIMPLE

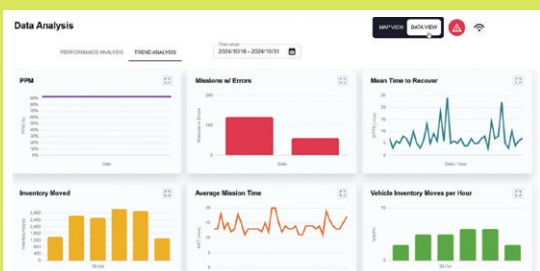
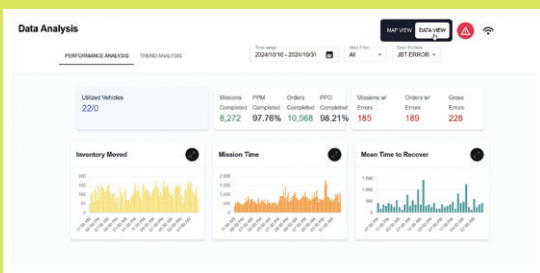
- Clear real-time visibility across your operation
- Intuitive tools for monitoring and analytics
- Streamlined management without unnecessary complexity
- Seamless horizontal and vertical integration with existing systems

### SCALABLE

- Manage multiple fleets—including different manufacturers—in one platform
- Coordinate hundreds of vehicles and thousands of storage locations
- Site-to-enterprise mobile robot asset management

### SUSTAINABLE

- Life cycle visibility to maximize system value over time
- Built-in asset management for smarter long-term decisions
- Flexibility to redeploy and adapt as needs change
- Proven performance in complex environments



## Benefits of mōt.OS®

### Interoperability—Enhancing Operational Efficiency

- **Increased Flexibility**—adapt and grow with minimal disruption
- **Centralized Management**—streamline your operations, saving time and resources
- **Scalability**—scale in line with your business needs
- **Comprehensive Integration**—enjoy a cohesive and efficient operational environment
- **Enhanced Vendor Collaboration**—achieve optimal performance and coordination

### Cybersecurity—Protecting Your Business

- **Centralized Authentication**—reduce authentication complexity and enhance security and efficiency
- **Safety Awareness Training**—empower your team and protect your organization
- **SOC 2 Type 2 Certification**—safeguard your data and remain compliant with global security protocols
- **Multi-Factor Authentication (MFA)**—reduce unauthorized access and keep your sensitive information safe
- **Security Protocols Support**—ensure secure communication and provide peace of mind

### AI/Machine Learning—Transforming Your Operations

- **Data-Driven Insights**—optimize logistics and processes and improve performance and cost savings
- **Autonomous Decision-Making**—ensure seamless and efficient operations
- **Predictive Maintenance**—address issues before they impact your operations
- **Path Optimization**—reduce travel time and energy consumption

