

# Total Automation Intelligence

for mission-critical operations



# FORMOVA

A JBT Marel Company

# Motion

# — adapted FOR —

# your industry



Today's operations—defined by constant change and increasing strain—can't afford to stand still. But pressure from rising demand, complex workflows, labor shortages, and cost constraints are making it harder than ever to move forward.

Automation transforms how work gets done—bringing structure and consistency to even the most complex environments. By combining advanced vehicles, intelligent orchestration software, and long-term life cycle support, Formova helps organizations moved beyond point solutions to fully connected systems that evolve over time. The result isn't just automation—it's a more resilient, scalable operation designed to keep moving.



## What automation makes possible



**Increase productivity**

by 10%-20%

Get the right material to the right place at the right time



**Increase efficiency**

by 20%-50%

Automate repetitive tasks, reduce downtime, and optimize routing and scheduling



**Reduce labor expenses**

Realize equivalent labor rates as low as \$4 per hour



**Increase material flow**

by 20%-30%

Optimize every route, handoff, and task; improve on-time delivery rates; and reduce cycle times

# How Formova keeps you forever in motion



## Industries we serve:

- Hospitals
- Food & Beverage
- Automotive
- Fast Moving Consumer Goods (FMCG)
- Building Materials
- Pharma and Life Sciences
- Warehouses/DCs
- Manufacturing
- Tissue, Paper, and Packaging

### A Legacy of Expertise

Automation pioneers for 40+ years

### Field-Tested Performance

700+ systems in operation

### Support Without Limits

Global coverage with rapid response

### Proven automation expertise, built in the real world

Every system is shaped by in-field insight and continuous improvement, designed to perform reliably today and adapt to tomorrow's demands.

### Partnership that keeps you moving

We're a long-term partner who works alongside your team from design through optimization, accountable to your system's performance.

### Safety and integrity engineered in

Our systems are engineered to reduce risk, minimize human error, and meet rigorous global standards.

### Motion that adapts and scales

No two operations are identical. That's why we provide automation for various industries that integrates seamlessly and scales with demand.



# Total Automation Intelligence for mission-critical operations

Automation brings together multiple elements—vehicles, software, and the support that keeps everything running. While many companies focus on just one piece, few deliver a fully integrated approach where true performance comes from how everything connects, communicates, and evolves over time.

Total Automation Intelligence is how Formova brings it all together. Because when every part of your operation is aligned, movement becomes more efficient, more predictable, and more resilient.



## FOR moving more with advanced vehicles

Formova's vehicles are built to do more than transport—they're designed to perform in complex, high-demand environments where precision, safety, and reliability are critical.

From compact mobile robots to heavy-duty AGVs, every vehicle is purpose-built to handle your materials, your workflows, and your challenges—seamlessly integrating into your operation and adapting as it evolves.

Because better movement starts with the right machines.

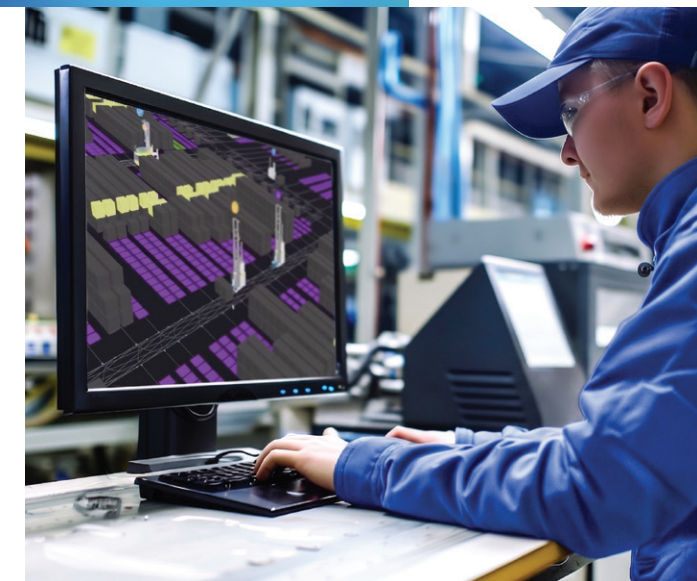
## FOR moving smarter with môt.OS®

One platform. Total control.

môt.OS® is the intelligence behind the motion—bringing visibility, coordination, and control across your entire operation.

Manage multiple fleets across multiple manufacturers in a single platform. Orchestrate traffic, streamline routes, and respond in real time as conditions change—all while gaining the insights needed to continuously improve performance.

**Simple. Scalable. Sustainable.**



## FOR moving forward with long-term support

Automation starts at deployment. We stay for everything after.

Formova provides ongoing support designed to keep your systems running at peak performance, from proactive maintenance and system optimization to responsive service when it matters most.

With decades of experience and a global presence, we help ensure your operation doesn't just keep moving—it keeps improving.

Because lasting performance requires lasting partnership.

# Motion adapted FOR your industry



## Advanced automation for complex fast-moving operations

From Manufacturing and Warehousing to Healthcare and Automotive, Formova delivers automation solutions tailored to the unique workflows, challenges, and demands of various industries. Thanks to decades of diverse real-world experience, Formova understands what it takes to design systems that integrate seamlessly into any environment. Because keeping operations moving demands a partner who knows the realities of your industry.



## For hospitals

Hospitals depend on reliable movement behind the scenes to support exceptional patient care. Formova helps healthcare organizations automate routine material transport through intelligent mobile automation designed to improve flow, reduce manual burden, and support safer, more efficient hospital operations.

## For cleaning large-scale operations

Autonomous cleaning solutions from Formova are designed to reduce labor, increase efficiency, and operate seamlessly within your facility or automation ecosystem. From warehouses and production facilities to commercial and public spaces, they deliver consistent high-performance cleaning—24/7.



## AGV product portfolio

Counterbalance forked automated guided vehicles (AGVs)  
Other load handling attachments available



	CB750	CB1500	CB2500	ATL	CB4500	Reach
Standard lift weight up to	750 kg / 1,600 lbs	1,500 kg / 3,300 lbs	2,500 kg / 5,500 lbs	2,500 kg / 5,500 lbs	4,500 kg / 10,000 lbs	2,041 kg / 4,500 lbs
Standard lift height up to	1,220 mm / 48"	5,100 mm / 201"	9,000 mm / 354"	2,540 mm / 100"	5,770 mm / 227"	12,500 mm / 490"
Standard lift speed up to	25 mm/s   1"/sec	200 mm/s   7.9"/sec	300 mm/s   12"/sec	220 mm/s   8.7"/sec	135 mm/s   5.3"/sec	300 mm/s   12"/sec
Standard travel speeds up to	2.0 mps / 394 fpm	2.0 mps / 394 fpm	2.0 mps / 394 fpm	2.0 mps / 394 fpm	2.0 mps / 394 fpm	2.0 mps / 394 fpm

## Hospital AMR product portfolio

Automated mobile robots (AMRs) purpose-built for hospitals



	Celeste	Apollo	Rocket	Eclipse
Vehicle size (L,W,H)	31.5" x 23.6" x 55.1"	31.5" x 23.6" x 55.1"	68.9" x 23.7" x 14"	64.8" x 23.7" x 53"
Maximum payload	330.7 lbs	330.7 lbs	1,100 lbs	1,100 lbs
Payload max. size (L,W,H)	n/a	n/a	60" x 33" x 73"	52" x 35.4" x 73"

## Cleaning AMR



	Floor Scrubber
Vehicle size (L,W,H)	37.8" x 33.4" x 35.4"
Cleaning speed	0.6 m/s
Cleaning performance	1,250 m <sup>2</sup> /h

# mōt.OS®

## One operating system. Total control.

mōt.OS® is Formova's motion operating system—and the heart of our Total Automation Intelligence offering, designed to maximize the life cycle value of your system.

It allows you to control multiple fleets from multiple manufacturers in a single, coordinated platform, giving you a clearer view of your operation and greater control over how everything moves.

The result: smarter decisions, smoother flow, and automation that is **SIMPLE**, **SCALABLE**, and **SUSTAINABLE**.

## Experience the power of Total Automation Intelligence

### SIMPLE

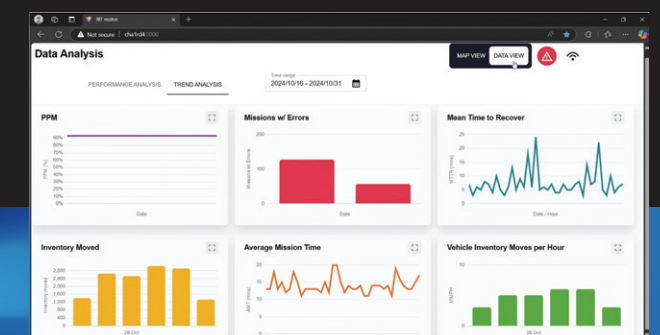
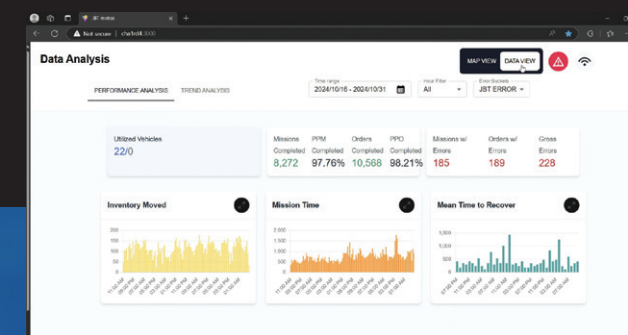
- Clear real-time visibility across your operation
- Intuitive tools for monitoring and analytics
- Streamlined management without unnecessary complexity
- Seamless horizontal and vertical integration with existing systems

### SCALABLE

- Manage multiple fleets—including different manufacturers—in one platform
- Coordinate hundreds of vehicles and thousands of storage locations
- Site-to-enterprise mobile robot asset management

### SUSTAINABLE

- Life cycle visibility to maximize system value over time
- Built-in asset management for smarter long-term decisions
- Flexibility to redeploy and adapt as needs change
- Proven performance in complex environments



## Benefits of mōt.OS®

### Interoperability—Enhancing Operational Efficiency

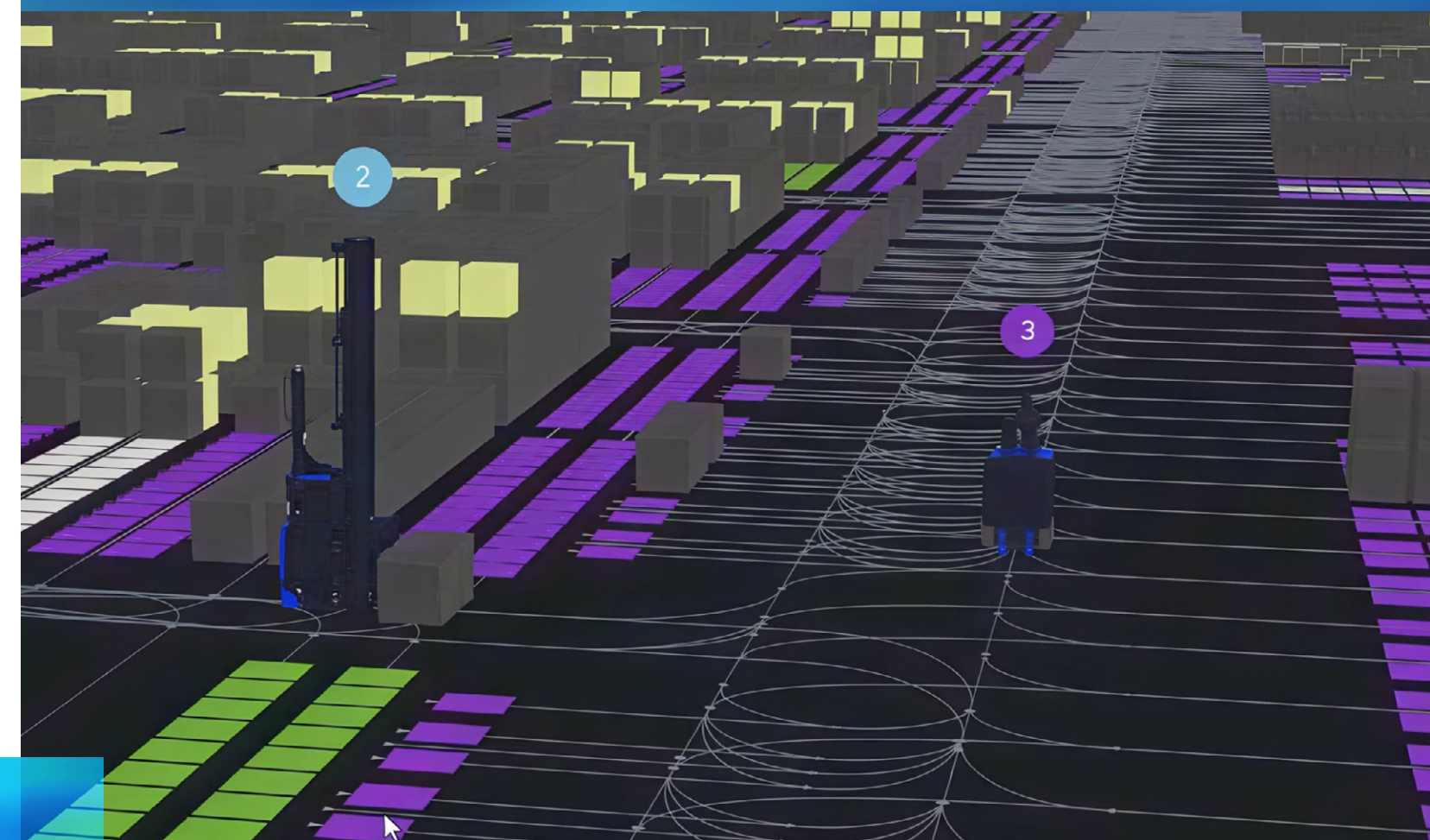
- Increased Flexibility—adapt and grow with minimal disruption.
- Centralized Management—streamline your operations, saving time and resources.
- Scalability—scale in line with your business needs.
- Comprehensive Integration—enjoy a cohesive and efficient operational environment.
- Enhanced Vendor Collaboration—achieve optimal performance and coordination.

### Cybersecurity—Protecting Your Business

- Centralized Authentication—reduce authentication complexity and enhance security and efficiency.
- Safety Awareness Training—empower your team and protect your organization.
- SOC 2 Type II Certification—safeguard your data and remain compliant with global security protocols.
- Multi-Factor Authentication (MFA)—reduce unauthorized access and keep your sensitive information safe.
- Security Protocols Support—ensure secure communication and provide peace of mind.

### AI/Machine Learning—Transforming Your Operations

- **Data-Driven Insights**—optimize logistics and processes and improve performance and cost savings.
- **Autonomous Decision-Making**—ensure seamless and efficient operations.
- **Predictive Maintenance**—address issues before they impact your operations.
- **Path Optimization**—reduce travel time and energy consumption.





Forever

in

motion