

### Efficient horizontal transport



### Economy and sustainability in horizontal transport

The CB750 all-electric AGV is the most economical vehicle in our counterbalance fleet and excels at applications where product is moved at or near floor level. The CB750 is not limited to floor operations and can interface with conveyors and small stands/platforms. Maximum lift height is up to 48" (1.25M) high.

#### CB750 Features

- Sustainable and efficient design
- 360° obstacle detection
- Flexible for various wood, plastic, or metal pallet types
- Interfaces with racks, conveyors, AS/RS, and other plant equipment
- Compatible with various fork options: tilt, side shift, fork positioning
- Automatic battery charging - contactless charging optional
- Load capacity up to 1,600 lbs (750 kgs) at 24" (60 mm) load center\*

#### CB750 Benefits

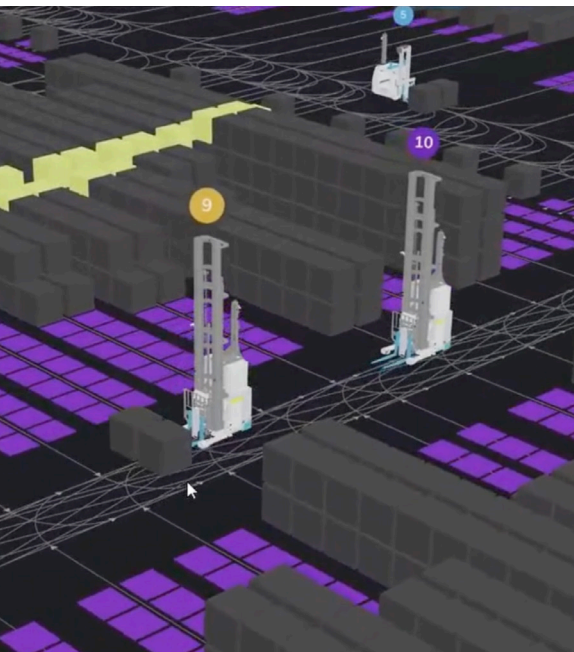
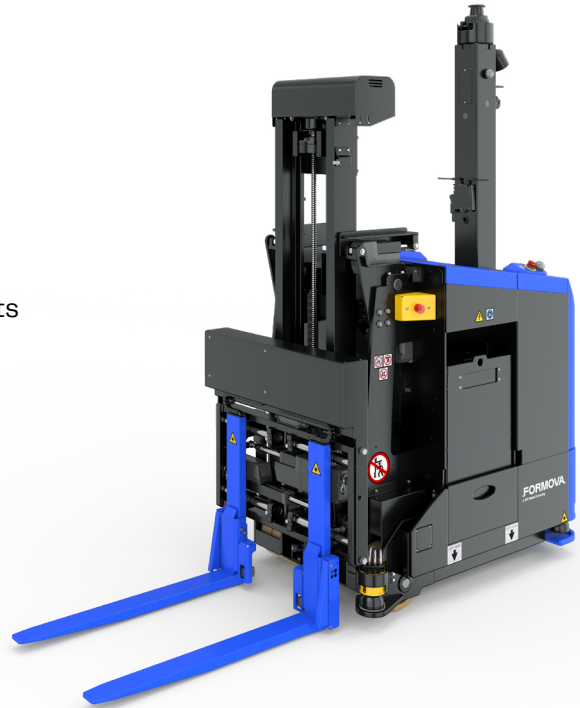
- Economical AGV for efficient horizontal transport
- Small footprint for optimal maneuverability
- Ideal for automating existing facilities with narrow aisles
- Reduces facility reconfiguration, maximizes existing space
- All-electric design reduces spare parts and maintenance
- Load detection increases load positioning accuracy

#### Typical Pick/Drops

- Cell-to-cell movement in Manufacturing
- Fast Moving Consumer Goods movement
- Floor-to-floor horizontal transport
- Raw material to/from dock to point of use
- Packaging material movement
- Rework or QA processing movement
- Pallet transport - empties returned

### CB750 Safety Features

- **Obstacle detection sensors**  
Full 360° protection with safety-rated lasers
- **Look-down sensor**  
Sees objects in vehicle's path above floor level
- **Warning lights**  
Amber turn signals, blue running lights, and red emergency lights
- **Blue AGV-approaching warning light**  
Shows AGV path and warns personnel in the area
- **Emergency stop buttons**  
Red buttons stop the vehicle immediately
- **Load detection and positioning sensors**  
Enhance safety by improving pick-up and drop-off accuracy
- **Manual safety reset button**  
Human intervention is required to confirm vehicle OK status
- **Battery restraint plate sensor**  
Confirms battery is safely confined within vehicle frame



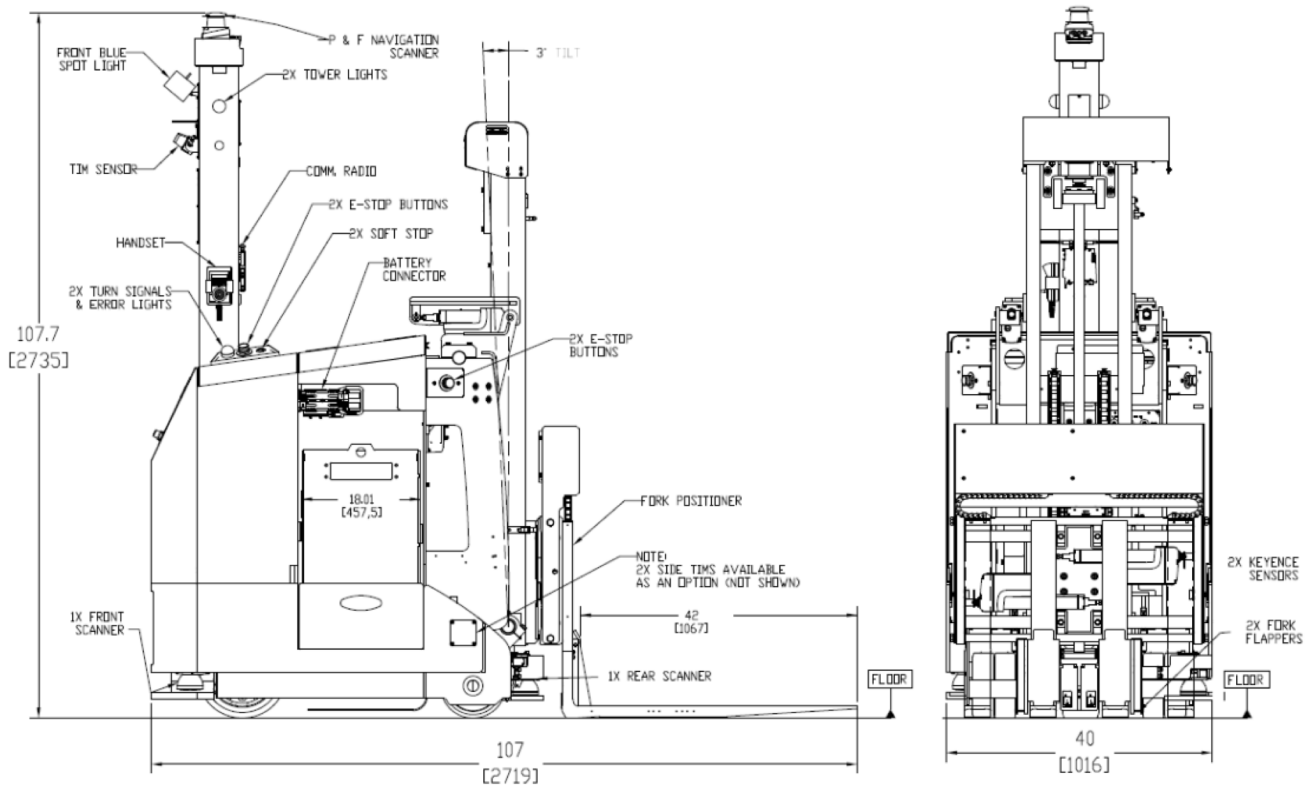
## mōt.OS®

### One Operating System. Total Control.

Designed to power Formova vehicles at scale, mōt.OS® is the heart of our total automation intelligence offering, helping maximize the life cycle value of your system.

It allows you to control multiple fleets from multiple manufacturers in a single coordinated platform, giving you a clearer view of your operation and greater control over how everything moves.

The result: smarter decisions, smoother flow, and automation that is **SIMPLE, SCALABLE, and SUSTAINABLE.**



## Technical Specifications\*

Operating Power	48vDC	Weight w/ Battery	8,017 lbs	3,636 kgs
Drive	Electric	Weight w/o Battery	5,667 lbs	2,570 kgs
Steer	Electric	Load Capacity	1,600 lbs max at 24" load center	750 kgs max at 600 mm load center
Lift	Electric Lead Screw	Vehicle Width	40"	1,016 mm
Braking	Regenerative Electro-Mechanical	Vehicle Height	107.7"	2,735 mm
Travel Speed	394 ft/min or 2.0 m/sec	Vehicle Length	107"	2,719 mm
Manual Controls	Joystick Controller	Lift Height	Up to 48"	Up to 1,220 mm
Navigation	Natural Feature, Laser, Rail, Deep Lane, etc.	Lift Speed	2"/second	50 mm/second

\*Specifications can vary based on application