

Loading dock safety and throughput



Smarter, safer, faster loading

When loading docks slow down, the entire operation feels it. Formova's Automated Trailer Loader (ATL) helps keep materials moving safely, efficiently, and continuously through one of the busiest points in your workflow.

Designed specifically for dock environments, ATL vehicles automate trailer loading and unloading without requiring modifications to existing trucks. Intelligent navigation and 360° obstacle detection help reduce disruption, improve shipment accuracy, minimize product damage, and create safer, more controlled dock operations.

The result is smoother flow, greater visibility, and dock operations that stay in motion.

ATL Features

- High floor clearance handles dock plate slopes
- Interfaces with other automated and manual equipment
- Soft tires cushion loads over the dock plate
- 360° obstacle detection
- Tilting mast accommodates slope of trailers
- Maximum fork height – 100" (2.5m) top of forks
- Load capacity up to 6,000 lbs (2,720 kgs) at 24" (60 mm) load center*

ATL Benefits

- Safe, efficient turnkey-ready trailer loader/unloader
- Single-double attachment enables four loads at once (2 x 2)
- Handles dock plates at varying heights and loading angles
- Powerful rear motor/torque hubs power loads in and out of trailers
- Side shifting enables equal load weight distribution within trailer
- Tilting mast handles challenging last trailer load pick or drop
- Accommodates many trailer loading patterns

Typical Pick/Drops

- Conveyor outlet of production
- Conveyor outlet of stretch wrapper
- Floor staging
- Block stacked staging
- Low level stand
- Standard, over-the-road trailer

ATL Safety Features

- **Obstacle detection sensors**
Full 360° protection with safety-rated lasers
- **Look-down sensor**
Sees objects in vehicle's path above floor level
- **Warning lights**
Amber turn signals, blue running lights, and red emergency lights
- **Blue AGV-approaching warning light**
Shows AGV path and warns personnel in the area
- **Emergency stop buttons**
Red buttons stop the vehicle immediately
- **Load detection and positioning sensors**
Enhance safety by improving pick-up and drop-off accuracy
- **Manual safety reset button**
Human intervention is required to confirm vehicle OK status
- **Battery restraint plate sensor**
Confirms battery is safely confined within vehicle frame
- **Dock interlocks**
Light curtains and other dock interlocks maximize safety during automated loading



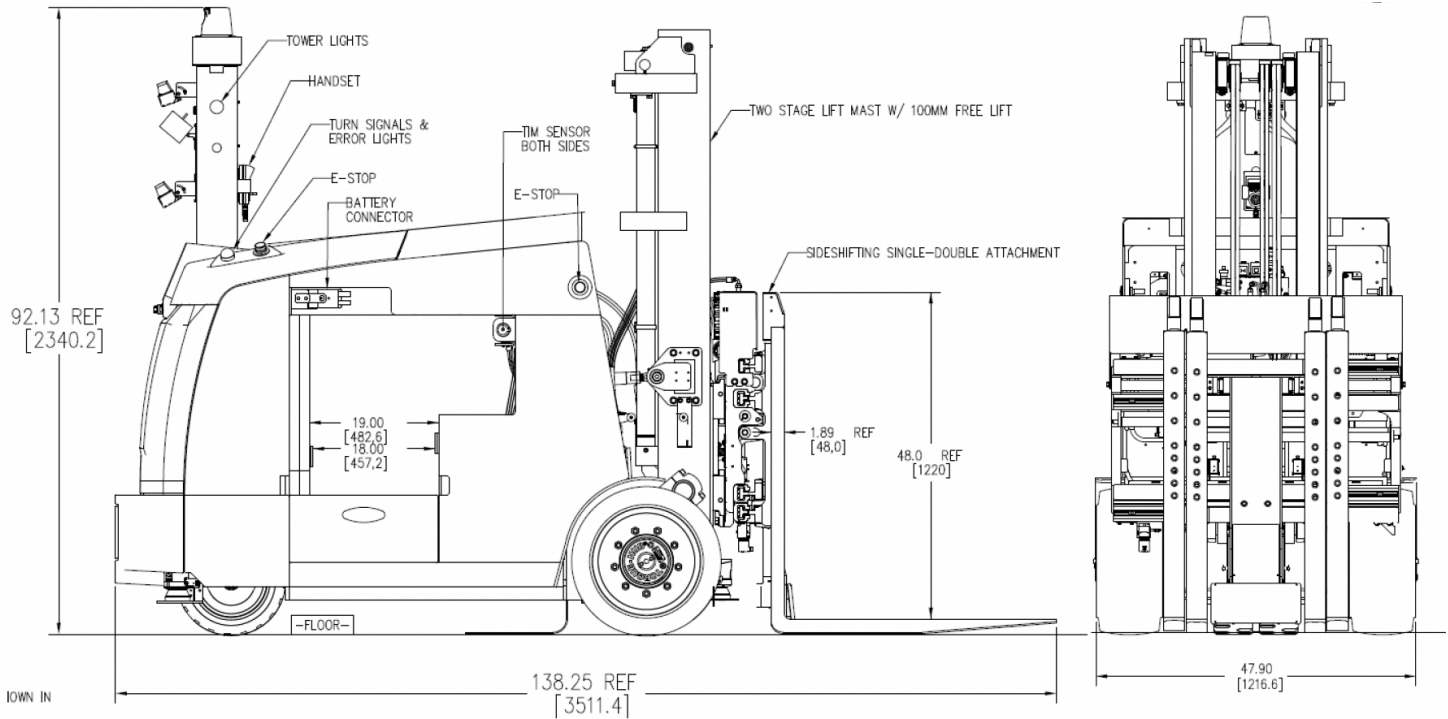
mōt.OS®

One Operating System. Total Control.

Designed to power Formova vehicles at scale, mōt.OS® is the heart of our total automation intelligence offering, helping maximize the life cycle value of your system.

It allows you to control multiple fleets from multiple manufacturers in a single coordinated platform, giving you a clearer view of your operation and greater control over how everything moves.

The result: smarter decisions, smoother flow, and automation that is **SIMPLE, SCALABLE, and SUSTAINABLE.**



Technical Specifications*

Operating Power	48vDC	Weight w/ Battery	13,120 lbs	5,963 kgs
Drive	Electric	Weight w/o Battery	10,620 lbs	4,827 kgs
Steer	Electric	Load Capacity	6,000 lbs max at 24" load center	2,720 kgs max at 600 mm load center
Lift	Hydraulic	Vehicle Width	47.9"	1,216 mm
Braking	Regenerative Electro-Mechanical	Vehicle Height	92.13"	2,340 mm
Travel Speed	394 ft/min or 2.0 m/sec	Vehicle Length	138.25"	3,511 mm
Manual Controls	Joystick Controller	Lift Height	Up to 100"	Up to 1,362 mm
Navigation	Natural Feature, Laser, Rail, Deep Lane, etc.	Lift Speed	8"/second	200 mm/second

*Specifications can vary based on application